

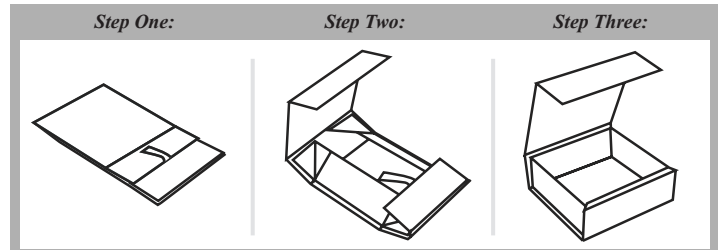
# Rigid Folding Wine Boxes

**4-Color Process Print**

Minimum 50 Boxes



- Fully Collapsible
- High Gloss Finish
- Superior Printing Surface
- Ships flat
- Full length inserts included for BB2
- Magnetic Closure



Size	Actual Wt Each	Unprinted		4-Color Process Print	
		5 per package	Price per EACH	5 per package	Price per EACH
<b>Rigid Folding Wine Boxes: Black Gloss (GBLA) &amp; White Gloss (GWHI)</b>					
<b>Single</b>					
13-1/2" x 3-5/8" x 3-1/2"	0.8	RF-XBB1___		PR-RFBB1___	
<b>Double w/divider</b>					
13-1/2" x 7-1/2" x 3-1/2"	1.1	RF-XBB2___		PR-RFBB2___	

# Wine Carriers & Boxes

**4-Color Process Print**

Minimum 60 Boxes



**Price includes:  
Printing, Product,  
& ALL Setup Charge**

Product Code	Style	Size	Ctn	Price per EACH
<b>Textured Rib Finish (TAW) or (BOR)</b>				
PR-LTBB1___	1 Bottle Box Vertical	3-1/2" x 3-1/2" x 13-3/8"	20	
PR-LTBB1TAWH	1 Bottle Box Horiz	3-1/2" x 3-1/2" x 13-1/4"	25	
PR-LTBB2___	2 Bottle Box	7-1/8" x 3-1/2" x 13"	10	
PR-LTBB3___	3 Bottle Box	10-3/4" x 3-1/2" x 13"	10	
PR-LTBC4TAW	4 Bottle Carrier	7" x 7" x 13"	20	
<b>IT Series Colors (See pg 42 &amp; 43 for color/size availability)</b>				
PR-ITBS1___	BS1 Bottle Carrier	3-1/2" x 3-1/2" x 15" - 4 Colors	100	
PR-ITBC1___	1 Bottle Carrier	3-1/2" x 3-1/2" x 15" - 7 Colors	50	
PR-ITBC2___	2 Bottle Carrier	7" x 3-1/2" x 15" - All 10 Colors	30	
PR-ITBC3___	3 Bottle Carrier	10-5/8" x 3-1/2" x 15" - 9 Colors	30	
PR-ITBBV1NAT	1 Bottle Box - End Opening	3-1/2 x 1-1/2 x 13-3/8 - NAT Only	50	
PR-ITBBMNER	Magnum Bottle Box	4-1/2" x 4-1/2" x 16-3/4" - NER only	20	
PR-ITBB1___	1 Bottle Box	3-3/4" x 3-3/4" x 13-3/8" - ORO, NER	100	
PR-ITBB2___	2 Bottle Box	7-1/4" x 3-1/2" x 13-3/8" - 4 Colors	30	
PR-ITBB3___	3 Bottle Box	11" x 3-1/2" x 13-3/8" - 4 Colors	30	

Price above includes one side printing, product and ALL set up charges.

Must be ordered in full cases.

Production Time: 7-10 business days from proof approval

Subject to review of artwork and pricing if print area exceeds 75% of print surface.

Exact PMS colors are not possible as all colors are converted to CMYK. Reference a Pantone PMS color bridge to see how your PMS color will appear. Prices subject to review of art. Additional charges may apply to orders with excess ink coverage.

© Identifies products manufactured in China that have recently been affected by a tariff. The tariffs are included in these prices.